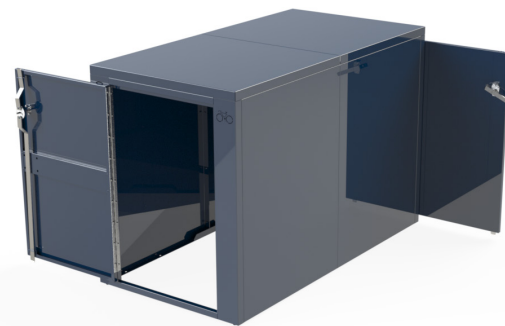


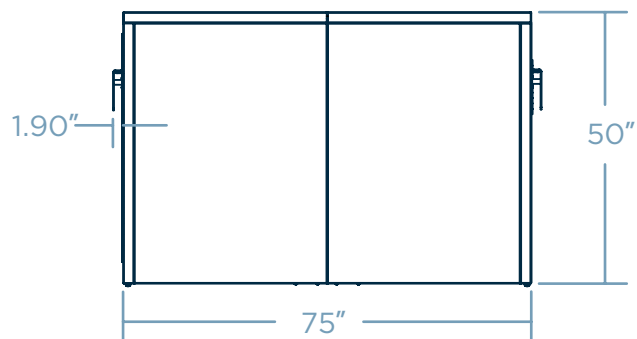
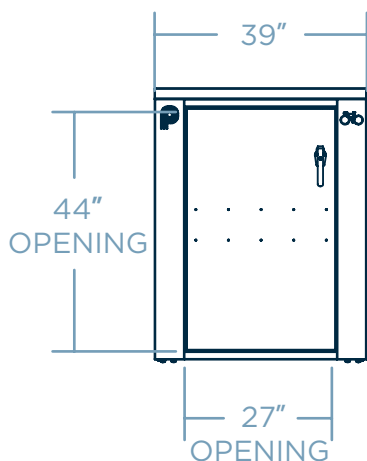
DOUBLE BIKE LOCKER

Introducing our Double Bike Locker – a cutting-edge solution for securely storing two bikes. Crafted with top-tier materials for lasting durability, this locker ensures enhanced bike safety in all weather conditions. With an advanced locking mechanism and space-optimized design, it's perfect for those with multiple bikes or shared spaces. Effortless assembly, low maintenance, and customizable colors make it a sophisticated addition to public areas, offices, or residences. Elevate your storage game with our Double Bike Locker – where security meets style.



 x 2 COST \$\$\$\$

DIMENSIONS



Weight - 315 lb
14 Gauge Steel

MOUNTING OPTIONS

☐ SURFACE MOUNT



FINISH OPTIONS

☐ POWDER COAT

☐ GALVANIZED STEEL

☐ THERMOPLASTIC*

☐ STAINLESS STEEL*

* will incur additional cost



QUANTITY _____

CUSTOMER _____

COLOR _____

PROJECT _____

DATE _____

APPROVED BY _____